

# How to control an Output on a MOXA ioLogik using the CoCoS MOXA connector

## Question or Case description

This article describes how to configure and control outputs on **Moxa ioLogik** devices using the new **device connector** in CoCoS.

The connector replaces the previous script-based method, providing a more user-friendly and reliable way to manage digital inputs and outputs.

Use this article when you want to:

- Create a Moxa ioLogik device in CoCoS.
- Control its digital outputs (turn ON/OFF or pulse).
- Read its input statuses.

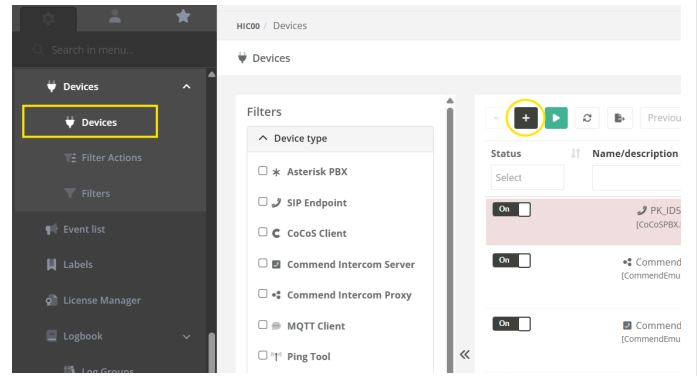
## Application

The Moxa ioLogik device is typically used to control external systems such as doors, gates, etc. This setup allows CoCoS to trigger digital outputs through a direct device connector, without the need for custom scripts or webhooks.

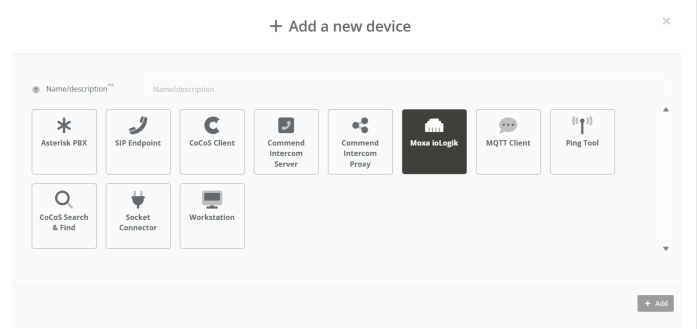
## How To

Follow the steps below to add and configure the Moxa ioLogik device, and control its outputs.

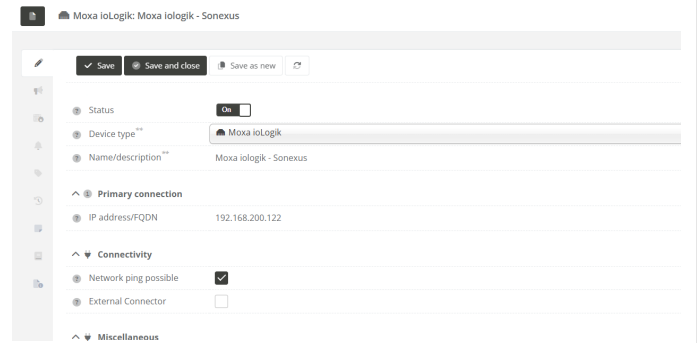
**Step 1:** Navigate to "**System / Devices**", and click on the **new device** button.



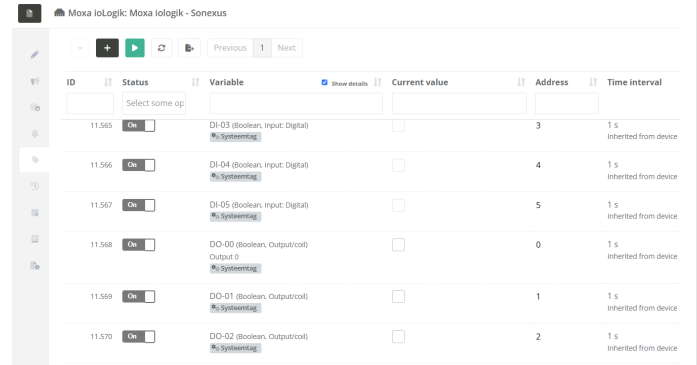
**Step 2:** Enter a clear and descriptive **Device Name** (for example: "Location - Moxa ioLogik"). Select **Moxa ioLogik** from the **Device Type** dropdown list, and click **Add**.



**Step 3:** In the device configuration panel:  
 - Enter the **IP Address** of the Moxa ioLogik.  
 - Set **Status** to **On**.  
 - Click **Save**.



**Step 4:** After saving, the device will automatically create a list of **Tags**. These tags represent the available **inputs** and **outputs** on the Moxa ioLogik.



**Step 5:** To **control an output**, use the corresponding tag:  
 - Set the tag value to on / off.  
 - Set the tag value to milliseconds for sending a pulse.

# Validation

To verify that the device and outputs are working correctly:

1. Open the **Device** view in CoCoS.
2. Check that the device shows as **Running**.
3. Toggle an output and observe the physical response (e.g., relay click, light indicator, or external system activation).

If the device does not respond / has status error:

- Ensure the IP address and network connection are correct.
- Confirm that the Moxa ioLogik is powered and reachable.
- Ensure "Restful API" is enabled on the Moxa ioLogik.

## References

- [Moxa ioLogik Official Documentation](#)

---

Revision #4

Created 2025-10-20 12:15:31 UTC by Rick

Updated 2026-04-21 11:57:04 UTC by André