

Pololu Maestro Controller not recognised by software

Symptoms

Although the Pololu Maestro Controller is connected to the system (e.g., a CoCoS Client or Sealink Imager), the software on this system is unable to communicate with the servo controller. As a result, hardware control functions do not work (such as PWM/servo/output), and/or input signals are not received.

Details

Depending on the system/software, an error may be displayed.

How to fix

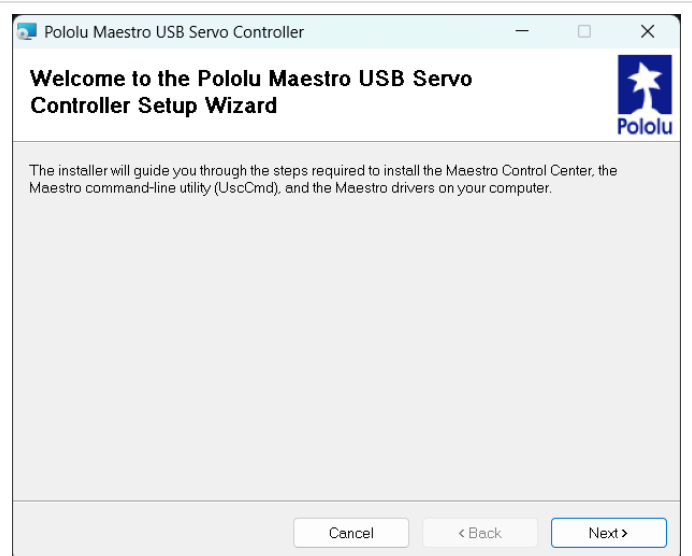
A (possible) fix can be found in the configuration/settings of the [Pololu Maestro Controller](#).

Step 1:

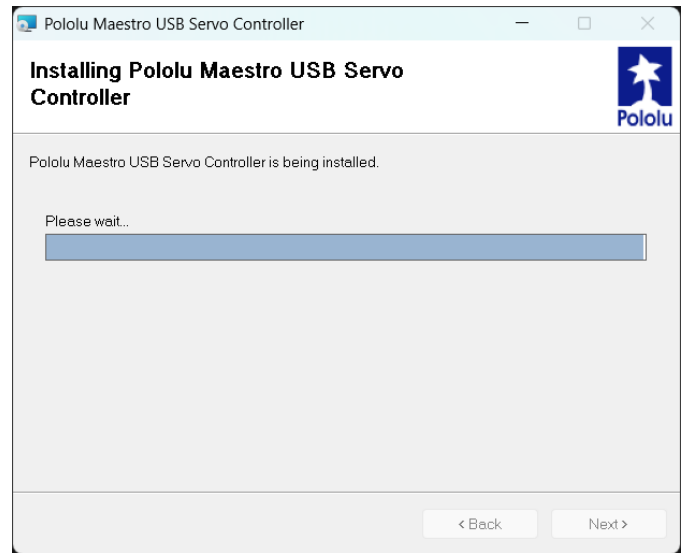
If not installed/available: Download the "*Pololu Maestro Control Center*" from

<https://www.pololu.com/file/0J266/maestro-windows-241004.zip> onto your PC and install it.

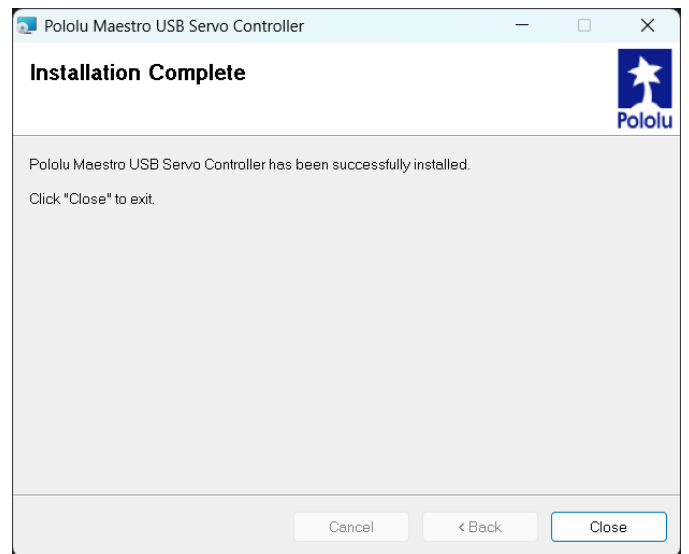
Use the [Next >] button a couple of times to start the installation. Most options are configured correctly by default and don't require adjustments.



Wait for the Pololu Maestro USB Servo Controller to be installed.



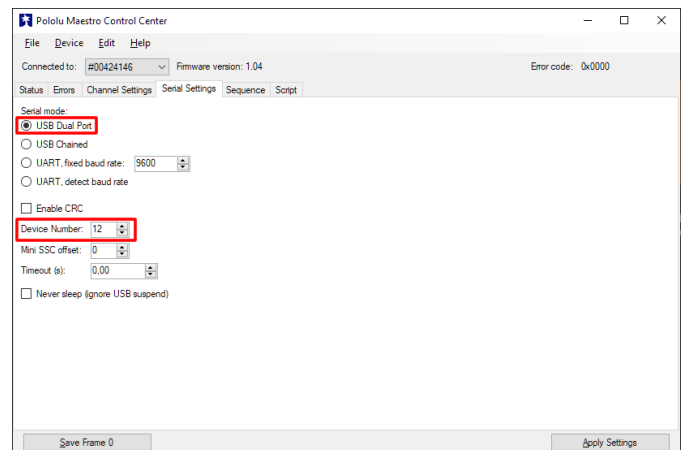
Hit the [Close] button once the installation is completed.



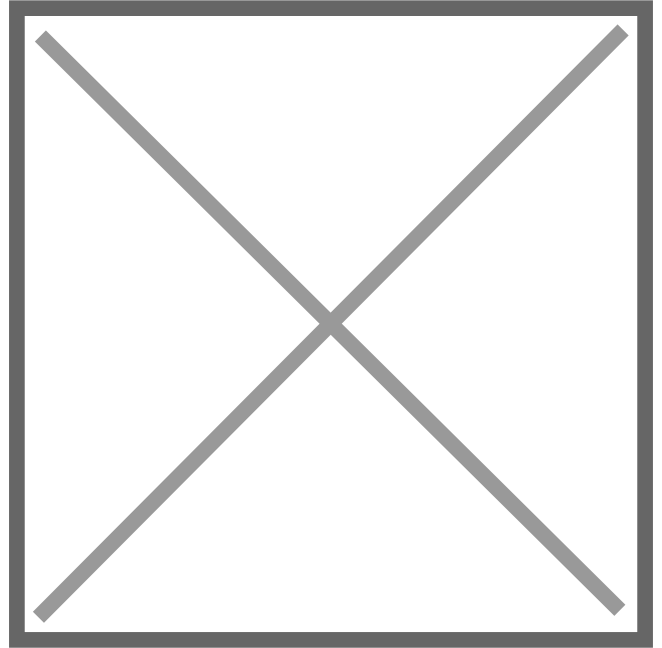
Step 2:
Open the Pololu Maestro Control Center and connect the Pololu Maestro Controller to your PC and read/check the settings from the connected device.

Also, check the settings for "Serial Mode" and "Device Number" in the tab "Serial Settings".

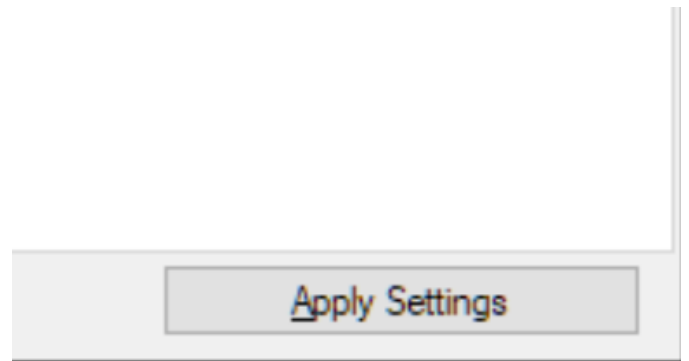
The screenshot at the right is just an example; the settings may vary depending on the project.



If available, use the option "File" -> "Open settings file..." in order to apply an existing configuration to the Pololu Maestro Controller.



Use the button [Apply Settings] to write the changes to the Pololu Maestro Controller.



After this, re-connect the Pololu Servo Controller back to the system (e.g., a CoCoS Client or Sealink Imager) and try again.

Friendly reminder: When changes/adjustments were necessary to get a Pololu working for a specific project, based on an existing settings file, always save/export the current settings and document/store it in the project where it belongs.

References

Configuration example(s):

- CoCoS Celpanel - <https://manuals.concera.com/books/celpaneel-intercom/page/aansluitingen>

- Sealink Imager - <https://manuals.concera.com/books/sealink-imager/page/vcxx-hardware-configuration>

Related Git issue(s):

- <https://github.com/Concera-Software/SealinkImager/issues/30>
-

Revision #2

Created 29 April 2026 11:55:21 by Stefan

Updated 29 April 2026 12:21:28 by Stefan